

Wednesday–Friday, May 4–6, 2011, 8pm
 Saturday, May 7, 2011, 2pm & 8pm
 Sunday, May 8, 2011, 3pm & 8pm
 Tuesday–Friday, May 10–13, 2011, 8pm
 Saturday, May 14, 2011, 2pm & 8pm
 Zellerbach Playhouse

Druid & Atlantic Theater Company



Robert Day

The Cripple of Inishmaan

by Martin McDonagh
 Directed by Garry Hynes

Druid is grant aided by the Arts Council of Ireland and gratefully acknowledges the support of Culture Ireland for funding its international touring program. The Cripple of Inishmaan is presented as part of Imagine Ireland, Culture Ireland's year-long season of Irish arts in America in 2011.

Imagine
Ireland



The Cripple of Inishmaan

CAST

(in order of appearance)

<i>Eileen</i>	Dearbhla Molloy
<i>Kate</i>	Ingrid Craigie†
<i>JohnnyPateenMike</i>	Dermot Crowley
<i>Billy Claven</i>	Tadhg Murphy†
<i>Bartley</i>	Laurence Kinlan†
<i>Slippy Helen</i>	Clare Dunne†
<i>BabbyBobby</i>	Liam Carney†
<i>Doctor McSharry</i>	Paul Vincent O'Connor
<i>Mammy O'Dougal</i>	Nancy E. Carroll

† These actors appear with the permission of Actors' Equity Association, pursuant to an exchange program between American Equity and Irish Equity.

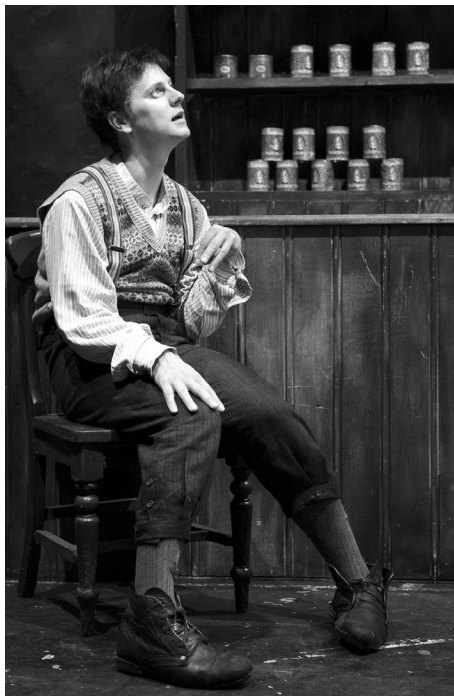
<i>Sets & Costumes</i>	Francis O'Connor
<i>Lights</i>	Davy Cunningham
<i>Sound</i>	John Leonard
<i>Composer</i>	Colin Towns
<i>U.S. Casting</i>	Laura Stanczyk
<i>Irish Casting</i>	Maureen Hughes
<i>Fight Director</i>	J. David Brimmer
<i>Company Stage Director</i>	Sarah Lynch
<i>Stage Manager</i>	David H. Lurie
<i>Assistant Stage Manager</i>	Sarah Lynch
<i>Production Manager</i>	Eamonn Fox

CREW

<i>Production Manager</i>	Eamonn Fox
<i>Technical Manager</i>	Barry O'Brien
<i>Master Carpenter</i>	Gus Dewar
<i>Deputy Master Carpenter</i>	Tony Cording
<i>Carpenter</i>	Peter Nelson
<i>Special Props</i>	Pete Casby, Matt Guinnane
<i>Technician</i>	Shannon Light
<i>Scenic Painters</i>	Sandra Butler, Jason McCaffrey, Noel Tate, Dympna Tate
<i>Costume Supervisor</i>	Doreen McKenna
<i>Wigs & Make-Up</i>	Val Sherlock
<i>Publicist</i>	Kate Bowe PR
<i>Graphic Design</i>	Bite!Associates
<i>Production Photography</i>	Robert Day

The U.S. tour of *The Cripple of Inishmaan* is produced by David Eden Productions.

Cal Performances' 2010–2011 season is sponsored by Wells Fargo.



Ros Kavanagh

Druid and the Plays of Martin McDonagh

On February 1, 1996, Druid presented the first performance of a new play by a then unknown writer, Martin McDonagh, at the Town Hall Theatre in Galway. *The Beauty Queen of Leenane* and its Druid production (with the Royal Court Theatre, London) went on to become a smash hit all over the world and earned an unprecedented four Tony Awards on Broadway in 1998 (with Atlantic Theater Company) for its Druid cast and director. *The Beauty Queen of Leenane* was followed by *A Skull in Connemara* and *The Lonesome West*, in what became known as *The Leenane Trilogy*, which over the period of five years toured to 31 venues on three continents.

In 2008, Druid premiered their new production of *The Cripple of Inishmaan* at the same Town Hall Theatre in Galway. With the same American partner, Atlantic Theater Company, *The Cripple of Inishmaan* toured the length and breadth of Ireland and to Oxford and Manchester in the United Kingdom before playing a sold-out, three-month off-Broadway run at the Atlantic Theater in New York.

On January 27, 2011, this production began one of the longest tours by an Irish theater company in decades, with a major, five-month coast-to-coast tour of the United States and Ireland, including U.S. stops in Ann Arbor, Berkeley, Boston, Charleston, Chicago, Los Angeles, New Haven, Washington, D.C., and Philadelphia and Irish stops in Roscommon, Dublin and Galway.

Fittingly, the final performance of this extensive tour will see Druid return to the island of Inis Meáin itself (titled Inishmaan in the play), where the play will be performed for the first time ever. And so on June 26, 2011, the islanders on Inis Meáin will gather in the local community hall to watch actors playing Inis Meáin people who during the course of the play will watch a film about Inis Meáin people. Confused? You won't be after the show!

The Cripple of Inishmaan by Martin McDonagh

Time and place: 1934. The island of Inishmaan off the west coast of Ireland.

About *Man of Aran*: *Man of Aran* was a documentary feature film directed by the American filmmaker Robert Flaherty in 1934. It depicted the supposed "daily life" of characters living on the Aran Islands off the western coast of Ireland. Many situations were fabricated, such as one in which fishermen are almost lost at sea on a shark hunt.

There will be one 15-minute intermission.

DRUID WAS FOUNDED by Garry Hynes, Mick Lally and Marie Mullen—graduates of the National University of Ireland, Galway—and has had two artistic directors: Garry Hynes (1975–1991 and 1995 to date) and Maeliosa Stafford (1991–1994). Productions include: *The Silver Tassie* (Galway; Irish and U.K. tours); *The Gigli Concert* (Galway Arts Festival & Irish tour); *The Walworth Farce* (world tour); *The New Electric Ballroom*; *The Cripple of Inishmaan* (Irish and U.K. tours and Atlantic Theater, New York); *Long Day's Journey into Night* (Galway and Dublin Theatre Festival); *Leaves* (Galway and Royal Court Theatre, London); *Empress of India* (Galway and Dublin Theatre Festival); *The Year of the Hiker* (Galway and Irish tour); *DruidSygne* (Galway Arts Festival, Dublin, Edinburgh International Festival, Inis Meáin; Minneapolis, Lincoln Center Festival New York); *Sharon's Grave; Sive; On Raftery's Hill; The Beauty Queen of Leenane; The Leenane Trilogy* (Royal Court co-productions); *Lovers' Meeting; Conversations on a Homecoming; Bailegangaire; The Shaughraun; and The Wood of the Whispering.*

Druid productions have won over 50 awards in Ireland and internationally including four Tony Awards for *The Beauty Queen of Leenane.*

Atlantic Theater Company (Neil Pepe, *Artistic Director*; Jeffery Lawson, *Managing Director*) is the award-winning Off-Broadway theater company dedicated to producing great plays simply and truthfully utilizing an artistic ensemble. Since its inception, Atlantic has produced over 125 productions including the Tony Award-winning play *The Beauty Queen of Leenane* (with Druid and Royal Court), the world premieres of Academy Award-winner Ethan Coen's comedies *Almost an Evening* and *Offices*, David Mamet's *Romance* and his adaptation of *The Voyage Inheritance*, the musical *Spring Awakening*, and double-bills of Harold Pinter's *Celebration*, *The Room*, *The Collection* and *A Kind of Alaska.*

J. David Brimmer, Fight Master, SAFD (*Fight Director*), worked on *The Cripple of Inishmaan* for Druid in New York. His other theater credits include *That Face*, *Speed-the-Plow*, *Spring*

Awakening, *The Lieutenant of Inishmore*, *Come Back*, *Little Sheba* (Broadway); *Ages of the Moon*, *Equivocation*, *Blasted*, *The American Pilot*, *Blackbird*, *Bug* and *Killer Joe* (New York premieres). Mr. Brimmer has also worked at the Public Theater, Atlantic Theater, Manhattan Theatre Club, Theatre for a New Audience, Dallas Theater Center, Hartford Center Stage, Baltimore Centerstage and Guthrie. He has taught at NYU/Tisch School of the Arts and was a RADA Guest Instructor and the Strasberg Institute and Yale. His favorite collaborators include Stella Adler, Joe Chaikin, JoAnne Akalaitis, Ken Russell and Franco Zeffirelli.

Liam Carney (*BobbyBobby*) has performed in *The Silver Tassie* for Druid. His other theater credits include *The Seafarer*, *Tales of Ballycumber*, *The Playboy of the Western World*, *Romeo and Juliet*, *Homeland*, *Portia Coughlan*, *Done Up Like a Kipper* (Abbey Theatre); *There Came a Gypsy Riding* (Livin' Dred Theatre Co.); *Frozen* (Tall Tales); *Mud* (Corn Exchange); *Studs* (Passion Machine); *Bedbound* (Dublin Theatre Festival); *Cruel and Tender*; *A Dublin Carol*; and *We Ourselves*. His film and television credits include *Running to Standstill*, *Speed Dating*, *Studs*, *Spin the Bottle*, *Ocras*, *Martin*, *Tubberware*, *Gangs of New York*, *When the Sky Falls*, *Angela's Ashes*, *The Boxer*, *Braveheart*, *Far Away*, *The Commitments*, *Pure Mule*, *The Clinic*, *Single Handed*, *Glenroe*, *The Ambassador*, *Ballykissangel*, *JJ Biker* and *Sharpes*.

Nancy E. Carroll (*Mammy O'Dougal*) makes her Druid debut in *The Cripple of Inishmaan*. Her other theater credits include *Present Laughter* (Broadway); *Bailegangaire* (Súgán Theatre Company); *Brendan*, *The Rose Tattoo*, *Dead End*, *Prelude to a Kiss* (Huntington Theatre Company); *Breath of Life*, *Doubt*, *Happy Days*, *My Old Lady* (Gloucester Stage); *The Clean House*, *Frozen*, *Sweeney Todd*, *Kindertransport* (New Repertory Theatre); *The Savannah Disputation*, *Company*, *A Man of No Importance* (Speakeasy Stage); *Trad* (Tír Na); *Year of Magical Thinking* (Lyric Stage); *Auntie & Me* (Merrimack Repertory Theatre); *Homebody/*

Kabul (Boston Theatre Works); *Humble Boy*, *Hamlet* and *Winter's Tale* (Publick Theatre).

Ingrid Craigie (*Kate*) has performed with Druid in *Lover's Meeting* and *The Donahue Sisters*. Her other theater credits include *The Plough and the Stars*, *The Man Who Came to Dinner*, *Aristocrats*, *Measure for Measure*, *The Glass Menagerie* (Abbey Theatre); *Hedda Gabler* (Abbey Theatre; Playhouse); *Wonderful Tennessee* (Abbey Theatre; Broadway); *Love in the Title* (Abbey Theatre; San Jose), *A Life* (Abbey Theatre; Old Vic); *Celebration*, *Arcadia*, *The Deep Blue Sea*, *The Collection*, *The Importance of Being Earnest*, *The Recruiting Officer* (Gate, Dublin); *Faith Healer* (Gate, Dublin; Sydney and Edinburgh festivals); *Play* (Gate, Dublin; Barbican); *The Weir* (Centaur, Montreal); *Crave* (Royal Court, Edinburgh, Berlin, Copenhagen, Bonn); *The Wexford Trilogy* (Bush, London); *The Colleen Bawn* (Royal Exchange Manchester); *The Misanthrope* (National Theatre); *Splendour*, *Boston Marriage* and *Copenhagen* (Project Arts Centre). Her film and television credits include *The Dead*, *Da*, *The Railway Station Man*, *Widows' Peak*, *Circle of Friends*, *Benedict Arnold*, *Sensation*, *The Citadel*, *When Harvey Met Bob*, *The Clinic*, *Ballykissangel*, *The Wexford Trilogy* and *The Ballroom of Romance*.

Dermot Crowley (*JohnnyPateenMike*) makes his Druid debut in *The Cripple of Inishmaan*. His other theater credits include *House of Games* (Almeida); *Breakfast at Tiffany's* (Haymarket); *Calico* (Duke of York's); *The Weir* (Duke of York's; Gate, Dublin; Broadway); *Translations* (Broadway); *Juno* (New York City Center); *Dealer's Choice* (Manhattan Theatre Club); *Stuff Happens*, *Scenes from the Big Picture*, *Amadeus*, *The Double Dealer*, *Richard III*, *The Woman* (National Theatre); *The Hostage* (RSC); and *A Whistle in the Dark* (Abbey Theatre; Royal Court). His film and television credits include *Holy Water*, *Babel*, *The Legend of Bagger Vance*, *The Son of the Pink Panther*, *Octopussy*, *Wilt*, *The Return of the Jedi*, *Giro City*, *Luther*, *Margaret*, *Foyle's War*, *Midsomer Murders*, *Bleak House*, *Spooks*, *Rebel Heart*, *Jonathan Creek*, *Falling for*

a Dancer, *Father Ted* and *The Sculptress*. His frequent broadcasts on BBC radio include the William Trevor novels *Love and Summer* and *The Story of Lucy Gault* for *Book at Bedtime*.

Davy Cunningham (*Lighting Design*) has worked extensively in theater and opera and has lit over 200 productions worldwide. His lighting has been seen in every major European opera company from Dublin to St. Petersburg, Turkey to Australia and throughout the United States. His work for Druid includes *The Silver Tassie* (Galway; Irish and U.K. tours), *The Gigli Concert* (Galway Arts Festival and Irish tour), *The Cripple of Inishmaan* (Galway; Irish and U.K. tours, New York), *Long Day's Journey into Night* (Galway and Dublin Theatre Festival), *DruidSynge* (Galway, Dublin, Edinburgh International Festival and Inis Meáin; Minneapolis and Lincoln Center Festival 2006), *Sive* and *The Well of the Saints*.

Clare Dunne (*Slippy Helen*) trained at the Royal Welsh College of Music and Drama. Her work for Druid includes *The Silver Tassie* (Irish and U.K. tours, 2010), *From Galway to Broadway and Back Again* and *The Playboy of the Western World* (United Kingdom and Galway, 2009). Her other theater credits include *Crunch* (Latitude Festival, 2009), *The Three Sisters* (Lyric Hammersmith & Filter), *A Midsummer Night's Dream* (Lyric Hammersmith & Filter at Latitude, 2010) and *Living with Missing* (Smock Alley, Dublin).

Maureen Hughes (*Casting Director, Ireland*) is Casting Director for Druid. She has worked with the company since 1984. From 1991 to 1994 she held the post of Casting Director at the Abbey Theatre, Dublin. She also works in film and TV in Ireland and the United Kingdom. Recent credits include the low-budget film *Once*, which won an Oscar for Best Song in 2008, and *Six Shooter* by Martin McDonagh, which won an Oscar for Best Short Film in 2007. She recently worked on the forthcoming feature by Paolo Sorrentino, *This Must Be the Place*, starring Sean Penn and Frances McDormand.

Garry Hynes (*Director*) founded Druid in 1975 and has worked as its Artistic Director from 1975 to 1991, and from 1995 to today. From 1991 to 1994, she was Artistic Director of the Abbey Theatre, Dublin. Garry has also worked with the Abbey and Gate theaters (Ireland) and internationally with the Royal Shakespeare Company and the Royal Court (United Kingdom), with Atlantic Theater, City Center Encores!, Second Stage, Signature Theatre and Manhattan Theatre Club in New York; and with the Kennedy Center in Washington, D.C. Her awards include the Joe A. Callaway Award (New York) for Outstanding Directing for *The Cripple of Inishmaan* (2009); Honorary Doctorates from the University of Dublin (2004), the National University of Ireland (1998) and the National Council for Education Awards (1988); and a Tony Award for Direction for *The Beauty Queen of Leenane* (1998). She is a recipient of many other theater awards, including the *Irish Times* ESB Irish Theatre Award for Best Director and a Special Tribute Award for her contribution to Irish theater (2005).

Laurence Kinlan (*Bartley*) has performed in *The Cripple of Inishmaan* (2008/09 Galway, Irish and U.K. tours, New York) for Druid. His other theater credits include *Christ Deliver Us!*, *The Plough and the Stars*, *On Such as We*, *The Playboy of the Western World* (Roddy Doyle and Bisi Adigun adaptation), *A Month in the Country* (Abbey Theatre), *Saved* (Peacock), *Between Foxrock and a Hard Place* (Landmark Productions) and *Poor Beast in the Rain* (Gate, Dublin). His film and television credits include *The Guard*, *My Boy Jack*, *Small Engine Repair*, *Johnny Was*, *Breakfast on Pluto*, *Boy Eats Girl*, *The Halo Effect*, *Intermission*, *Veronica Guerin*, *Ned Kelly*, *Last Days in Dublin*, *On the Nose*, *Everlasting Piece*, *Saltwater*, *Country*, *Angela's Ashes*, *On Home Ground*, *The Bill*, *Soft Sand Blue Sea* and *Love/Hate*.

John Leonard (*Sound Design*) started work in theater sound 35 years ago, during which time he has provided soundtracks for theaters all over the world. His work for Druid includes *The Silver*

Tassie (Galway; Irish and U.K. tours), *The Gigli Concert* (Galway Arts Festival; Irish tour), *The Cripple of Inishmaan* (Galway; Irish and U.K. tours; New York), *Long Day's Journey into Night* (Galway; Dublin Theatre Festival), *DruidSynge* (Galway, Dublin, Edinburgh International Festival and Inis Meáin; Minneapolis and Lincoln Center Festival, New York 2006), *Sive* and *The Well of the Saints*. Mr. Leonard has written an acclaimed guide to theater sound, and he is the recipient of Drama Desk and LDI Sound Designer of the Year awards and Honorary Fellowships from the Guildhall School of Music and Drama and the Hong Kong Academy of Performing Arts.

David H. Lurie (*Stage Manager*) makes his Druid debut with *The Cripple of Inishmaan*. His other theater credits include *Speed-the-Plow* (Barrymore); *Losing Louie* (Biltmore); *The Understudy*, *The Glass Menagerie* (Roundabout); *Coraline* (MCC); *Equivocation*, *From Up Here*, *Beauty of the Father*, *A Picasso* (Manhattan Theatre Club); *The Collection*, *A Kind of Alaska*, *The Voyage Inheritance* (Atlantic); and *Tryst* (Promenade). Mr. Lurie has also worked with regional theaters, including Huntington Theater Company (seven seasons), Williamstown Theater Festival (eight seasons), Signature Theater (Virginia), Dallas Theater Center, Hartford Stage and the Acting Company. He is a graduate of Boston University.

Sarah Lynch (*Company Stage Director, Assistant Stage Manager*) has worked since 1999 as a stage manager with Druid and has toured extensively with the company both at home and abroad. During this time, she has also played the part of the "old woman" in Druid's production of *Sharon's Grave*. As a stage manager, her numerous productions for Druid include *The Silver Tassie*, *The Gigli Concert*, *The Walworth Farce*, *The New Electric Ballroom*, *The Cripple of Inishmaan* and *DruidSynge*, and she directed *Lynndie's Gotta Gun*, a one-act play by Enda Walsh. Ms. Lynch is also an accomplished singer-songwriter, and in 2010 released her debut album, *Letter to Friends*.

The Cripple of Inishmaan is Martin McDonagh (Writer)'s fourth play with Druid. His other plays include *A Behanding in Spokane* (Schoenfeld Theater, Broadway, 2010); *The Pillowman* (National Theatre, London, 2003; Booth Theatre, Broadway, 2005); *The Lieutenant of Inishmore* (Royal Shakespeare Company, 2001; Lyceum Theatre, Broadway, 2006); *The Lonesome West* (Druid/Royal Court Theatre co-production, 1997; Lyceum Theatre, Broadway, 1999); *A Skull in Connemara* (Druid/Royal Court Theatre co-production, 1997); *The Cripple of Inishmaan* (National Theatre, London, 1997); *The Beauty Queen of Leenane* (Druid/Royal Court Theatre co-production, 1996; Walter Kerr Theatre, Broadway, 1998). His film credits include *In Bruges*, *Six Shooter* (short), *Seven Psychopaths* and *Three Billboards Outside of Ebbing, Missouri*.

Dearbhla Molloy (*Eileen*) has worked with Druid in *The Cripple of Inishmaan* (2008–2009 Irish and U.K. tours; New York). Her other theater credits include *Dancing at Lughnasa*, *Aristocrats*, *The Misanthrope*, *Translations*, *Ivanov*, *Living Quarters*, *Mrs. Warren's Profession*, *A Life* (Abbey Theatre); *Juno and the Paycock*, *Dancing at Lughnasa*, *A Touch of the Poet* (Broadway); *In Celebration*, *Arcadia*, *Hamlet*, *As You Like It*, *Much Ado about Nothing* (West End); *The Cripple of Inishmaan*, *Hinterland*, *On the Ledge* (National Theatre); *The Hostage*, *Shadow of a Gunman* (RSC); *Doubt* (Tricycle); *Macbeth* (Bristol Old Vic); *Phædre*, *Uncle Vanya*, *The Philanthropist*, *Come on Over* (Gate, Dublin); *The Plough and the Stars* (Gaiety). Ms. Molloy has won two Drama Desk Awards, a Theatre World Special Award, a London Critics Award, two Irish Theatre Awards and a U.S. Audie Award. She has been nominated for Tony, Royal Television Society, IFTA and Grammy awards. Her film and television credits include *The Damned United*, *Tara Road*, *Blackwater Lightship*, *New Tricks*, *Midsomer Murders*, *Waking the Dead*, *Foyle's War*, *Touch of Frost*, *Home for Christmas*, *GBH* and *55 Degrees North*.

Tadhg Murphy (*Billy Claven*)'s work for Druid includes *Penelope* (New York, Ireland, Edinburgh, Finland), *The Walworth Farce* (2009–2010 world tour (Ireland, United Kingdom, Canada, United States, Australia, New Zealand), National Theatre, London, New York (2008), Edinburgh Festival Fringe (2007)) and *Empress of India* (Galway and Dublin Theatre Festival). His other theater credits include *MedEia* (Corcodorca); *Three Sisters*, *Julius Caesar*, *The Importance of Being Ernest* (Abbey Theatre); *Dublin by Lamplight* (Corn Exchange); *The Taming of the Shrew* (Rough Magic); *The Real Thing* (Gúna Nua); *Macbeth*, *Romeo and Juliet* (Second Age); and *A Christmas Carol* (Gate, Dublin). Mr. Murphy's film and television credits include *Pride and Joy*, *Jelly Baby*, *Boy Eats Girl*, *Alexander*, *Good Man Danny*, *Hide and Seek*, *Love is the Drug*, *No Tears* and *The Clinic*.

Francis O'Connor (*Designer*) is a regular collaborator with Garry Hynes and Druid. His designs for plays, musicals and opera have been seen in Ireland, the United Kingdom, and throughout the United States, Europe and Asia. His Druid productions include *The Silver Tassie*, *The Gigli Concert*, *The Cripple of Inishmaan*, *Long Day's Journey into Night*, *Leaves*, *Empress of India*, *DruidSynge*, *The Playboy of the Western World*, *The Beauty Queen of Leenane*, *The Year of the Hiker*; *The Lonesome West*, *The Leenane Trilogy*, *Sive*, *My Brilliant Divorce*, *The Tinker's Wedding* and *Sharon's Grave*. His awards include two *Irish Times* Best Design Awards, Boston Critics Circle, Dora Mavor Moore Award and, most recently, a nomination for the Faust Prize in Germany.

Paul Vincent O'Connor (*Doctor McSharry*) makes his Druid debut with *The Cripple of Inishmaan*. His theater credits include *August: Osage County* (Sydney, Australia; U.S. tour; National Theatre), *The Seafarer* (Geffen Playhouse) and 16 years as a member of the Oregon Shakespeare Festival. His extensive film and television credits include *Seabiscuit*, *Inherit*

the Wind, *Law & Order: Los Angeles*, *24*, *West Wing*, *Numbers* and *Cold Case*.

Laura Stanczyk (*Casting Director, United States*) has cast *The Cripple of Inishmaan* and *Long Day's Journey into Night* for Druid. Her other theater credits include *The Skylark*, *There Are No Soulmates*, *Zeros and Ones*, *Lombardi*, *Ragtime*, *Impressionism*, *The Seafarer*, *Radio Golf*, *Coram Boy*, *Translations*, *Damn Yankees* (Encores! Summer Stars); *Dirty Dancing*, *The Glorious Ones*, *Who's Afraid of Virginia Woolf*, *Sweet Charity*, *Wonderful Town*, *Harp and Angels* (Center Theatre Group); *Grotesque Playground Injuries* (Alley); *Master Class*, *The Lisbon Traviata*, *Golden Age* (Kennedy Center); *Me Myself & I*, *Fetch Clay Make Man* (McCarter); *The Shawshank Redemption* (Dublin, West End); and *The Importance of Being Ernest* (Rough Magic). Her film and television credits include *Book of Kings* and *Once Upon a Mattress*. Ms. Stanczyk has been nominated for four Artios Awards for Excellence in Casting.

Colin Towns (*Composer*) has written music for *The Cripple of Inishmaan* and *Long Day's Journey into Night* for Druid. His other theater credits include *The Prisoner of Second Avenue* (London); *Rain Man* (London); *Hamlet* (Chicago Shakespeare Theater); *Blackthorn*, *Macbeth*, *The Cherry Orchard*, *The Crucible*, *One Flew over the Cuckoo's Nest* and others (Theatr Clywd); *The Orpheus Suite* (Birmingham Royal Ballet); *The Little Foxes* (Donmar); *Royal Hunt of the Sun* (Tokyo); *Henry V* (RSC). His film and television credits include *Maybe Baby*, *Albert Schweitzer*, *Essex Boys*, *Space Truckers*, *Full Circle*, *The Puppet Masters*, *Vampire's Kiss*, *Our Friends in the North*, *Doc Martin*, *Goodbye Mr. Chips*, *The World of Peter Rabbit and Friends* and *Angelina Ballerina*. Mr. Towns works with many European jazz big bands. Most recently, he arranged, recorded, toured and released a program of John Lennon's music entitled *John Lennon: In My Own Write*. This year he launches his new band, Blue Touch Paper.

Founded in 1913, Actors' Equity Association (AEA) represents more than 49,000 actors and stage managers in the United States. AEA's mission is to promote the art of live theater as an essential component of our society. AEA negotiates wages and working conditions, providing a wide range of benefits, including health and pension plans, for its members. AEA and the League of Resident Theatres have maintained a collaborative and mutually beneficial relationship through collective bargaining since 1966.

David Eden Productions, Ltd. (DEP), has been one of the leading American organizations devoted to producing international work in the United States for over 20 years. Most recently, DEP has produced North American tours of Druid's *The Walworth Farce* and *DruidSynge*, presenting their productions of *The Shadow of the Glen* and *The Playboy of the Western World*. Other recent tours include the Gate Theatre Dublin's *Waiting for Godot*; Declan Donnellan's *Twelfth Night*; Propeller's *The Winter's Tale*; Piccolo Teatro di Milano's *Arlecchino*; the Russian Patriarchate Choir of Moscow; Batsheva Dance Company; and the State Ballet of Georgia with the legendary Bolshoi prima ballerina Nina Ananiashvili. In 2004, David Eden curated Lincoln Center Festival's *Ashton Celebration*, a two-week centennial retrospective at the Metropolitan Opera House celebrating master choreographer Sir Frederick Ashton. Other notable projects include U.S. tours of the Bolshoi Ballet; festival programs for the Kennedy Center, including *Arts of the United Kingdom* (2001), *Island: Arts from Ireland* (2000) and *Art of the State: Israel at 50* (1998); and premiere presentations of international theater and dance projects at the BAM Next Wave and Lincoln Center festivals.

Druid

Patron Mary McAleese, President of Ireland
Éarlamb Máire Mhic Ghiolla Íosa, Uachtarán na hÉireann

Board

Séamus O'Grady, *Chairman*
Tarlach de Blácam
Breda Ryan
Eugene O'Kelly
Donal Shiels
Donncha O'Connell

Founders

Garry Hynes
Mick Lally (1945–2010)
Marie Mullen

For Druid

Artistic Director Garry Hynes
Finance Director Bernie Harrigan
General Manager Tim Smith
Literary Manager Thomas Conway
Marketing & Development Manager Sinead McPhillips
Administrator Ruth Gordon
Financial Administrator Lisa Nolan

Druid wishes to express its continuing gratitude to Thomas McDonogh & Company Ltd for their support of the company and gratefully acknowledges the assistance of Galway City Council and Galway County Council.

For David Eden Productions, Ltd.

Producer David Eden
General Manager Erica Charpentier
Production Manager Trevor Long
Public Relations Scott Watson
Visa Coordinator Elise-Ann Konstantin
Travel Agent Lori Harrison, Atlas Travel